

**Buckingham Estates**  
**Readington Township**  
**Hunterdon County**

**Bedminster Model**  
**Federal Elevation**

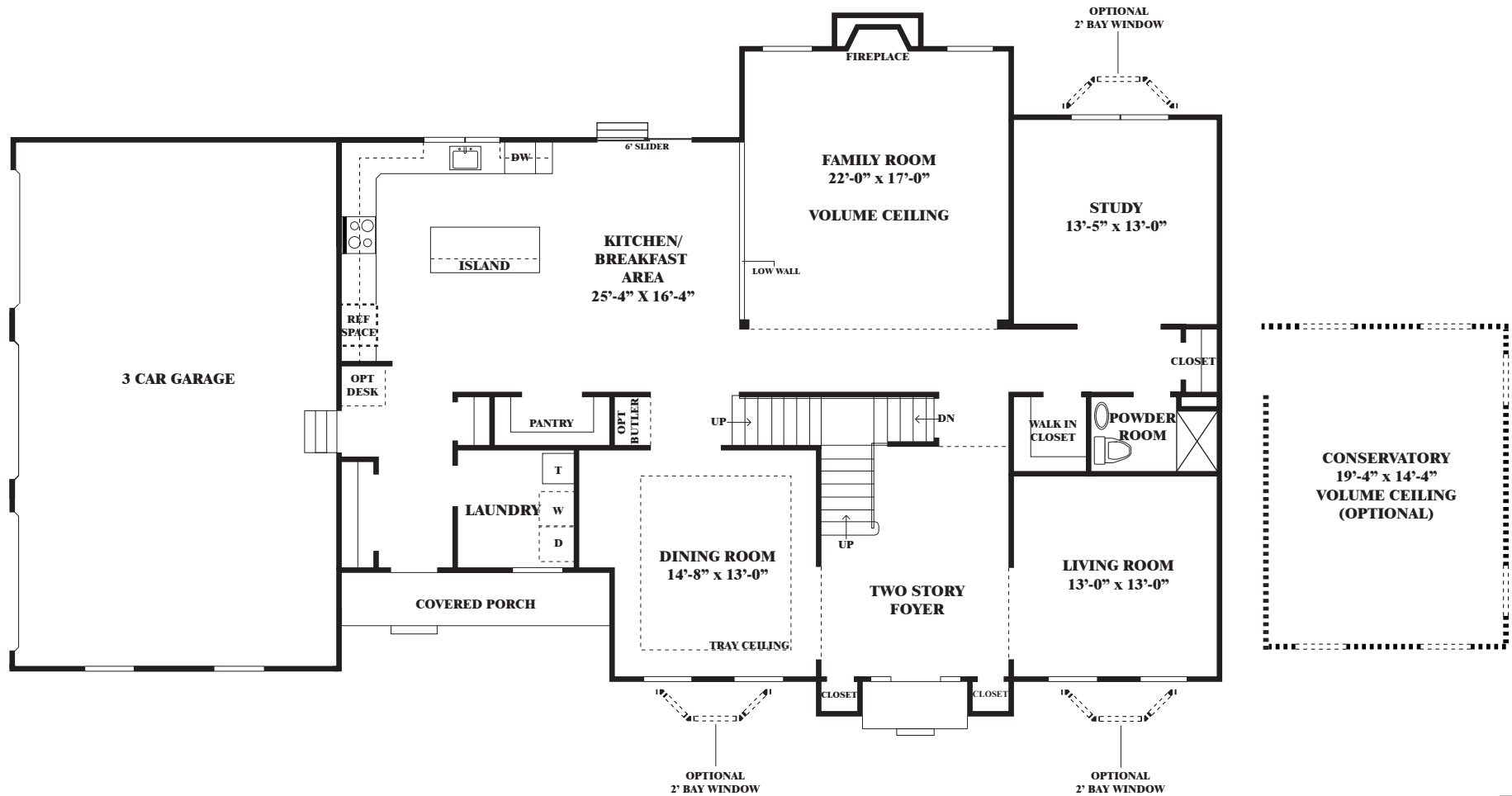


Elevations and floorplans are artistic renderings only and are not intended to be an exact representation. All dimensions and square footages are approximate and are subject to field variations. Drawings not to scale. Details shown may vary depending on elevations, options and other factors. Plans, prices, specifications, details and available options are subject to change without notice. Please consult a Sales Manager for more information.



**Buckingham Estates**  
**Readington Township**  
**Hunterdon County**

**Bedminster Model**  
**First Floor**

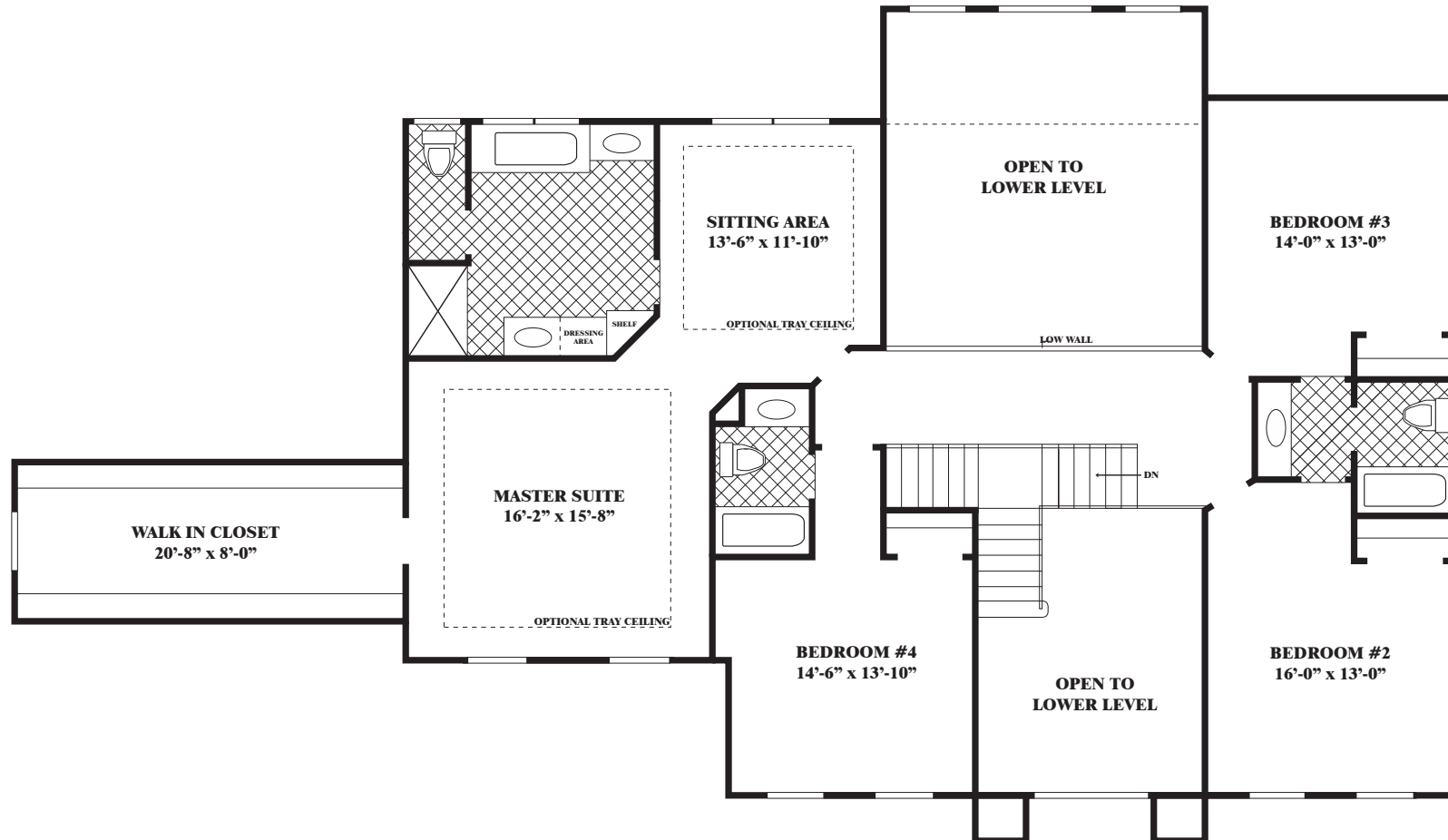


Elevations and floorplans are artistic renderings only and are not intended to be an exact representation. All dimensions and square footages are approximate and are subject to field variations. Drawings not to scale. Details shown may vary depending on elevations, options and other factors. Plans, prices, specifications, details and available options are subject to change without notice. Please consult a Sales Manager for more information.



**Buckingham Estates**  
**Readington Township**  
**Hunterdon County**

**Bedminster Model**  
**Second Floor**



Elevations and floorplans are artistic renderings only and are not intended to be an exact representation. All dimensions and square footages are approximate and are subject to field variations. Drawings not to scale. Details shown may vary depending on elevations, options and other factors. Plans, prices, specifications, details and available options are subject to change without notice. Please consult a Sales Manager for more information.



**Buckingham Estates**  
**Readington Township**  
**Hunterdon County**

**Bedminster Model**  
**Grande Manor Elevation**



Elevations and floorplans are artistic renderings only and are not intended to be an exact representation. All dimensions and square footages are approximate and are subject to field variations. Drawings not to scale. Details shown may vary depending on elevations, options and other factors. Plans, prices, specifications, details and available options are subject to change without notice. Please consult a Sales Manager for more information.



**Buckingham Estates**  
**Readington Township**  
**Hunterdon County**

**Bedminster Model**  
**Colonial Elevation**



Elevations and floorplans are artistic renderings only and are not intended to be an exact representation. All dimensions and square footages are approximate and are subject to field variations. Drawings not to scale. Details shown may vary depending on elevations, options and other factors. Plans, prices, specifications, details and available options are subject to change without notice. Please consult a Sales Manager for more information.

